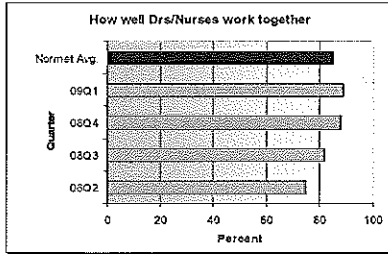
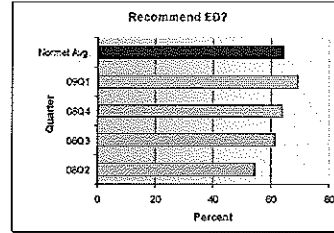


NY Hospital #1  
Patient Volume 40,000



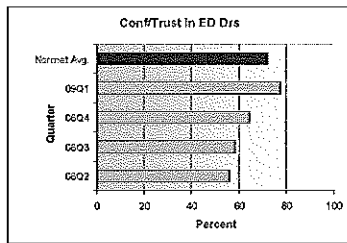
**MED EXCEL**

NY Hospital #1  
Patient Volume 40,000



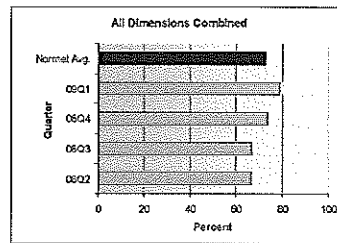
**MED EXCEL**

NY Hospital #1  
Patient Volume 40,000



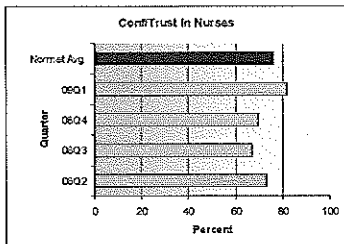
**MED EXCEL**

NY Hospital #1  
Patient Volume 40,000



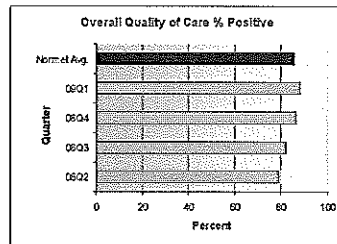
**MED EXCEL**

NY Hospital #1  
Patient Volume 40,000



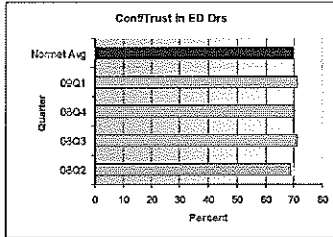
**MED EXCEL**

NY Hospital #1  
Patient Volume 40,000



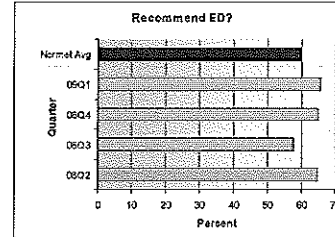
**MED EXCEL**

NY Hospital #2  
Patient Volume 34,000



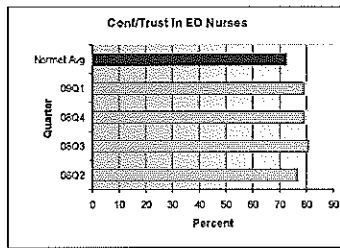
**MED EXCEL**

NY Hospital #2  
Patient Volume 34,000



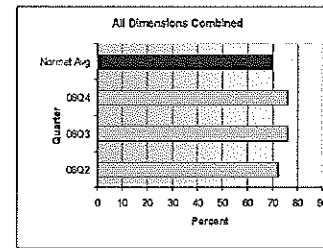
**MED EXCEL**

NY Hospital #2  
Patient Volume 34,000



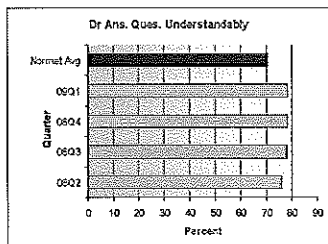
**MED EXCEL**

NY Hospital #2  
Patient Volume 34,000



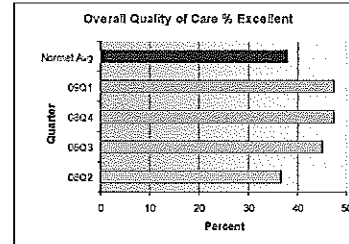
**MED EXCEL**

NY Hospital #2  
Patient Volume 34,000



**MED EXCEL**

NY Hospital #2  
Patient Volume 34,000



**MED EXCEL**